

Cabinet 14/10/2024 Appendix 2: Brent Climate Action Data Dashboard – July 2024 edition

Contents

The Brent Climate Action Data Dashboard includes the following tables and graphs:

Table 1: Borough-wide carbon emission statistics

Table 2: Key Performance Indicators by Climate & Ecological Emergency Strategy Theme

- Theme 1 – Consumption, Resources and Waste
- Theme 2 – Sustainable Travel
- Theme 3 – Homes, Buildings and the Built Environment
- Theme 4 – Nature and Green Space
- Theme 5 – Supporting Communities

Note: Theme 2 includes a selection of KPIs from the Healthy Streets Scorecard which is released annually in July. The full Scorecard is available at this link:

https://www.healthystreetsscorecard.london/results/results_indicator_charts/

Tables Key:

- * Counted as boroughs in **West London Climate Emergency Group** = *Barnet, Brent, Ealing, Hammersmith & Fulham, Harrow, Hillingdon, Hounslow, Richmond, Wandsworth*
- ** Counted as **Inner London Authorities** = *Camden, City of London, Greenwich, Hackney, Hammersmith and Fulham, Islington, Kensington and Chelsea, Lambeth, Lewisham, Newham, Southwark, Tower Hamlets, Wandsworth and Westminster*
- *** Counted as **Outer London authorities** = *Barking and Dagenham, Barnet, Bexley, Brent, Bromley, Croydon, Ealing, Enfield, Haringey, Harrow, Havering, Hillingdon, Hounslow, Kingston upon Thames, Merton, Redbridge, Richmond upon Thames, Sutton, Waltham Forest*
- **** Counted as **Inner London Authorities as above excluding** (*due to lack of data*) = *City of London, Greenwich, Lewisham, Southwark, Tower Hamlets, Westminster*
- ***** Counted as **Outer London Authorities as above excluding** (*due to lack of data*) = *Bexley, Bromley, Croydon, Kingston upon Thames, Merton, Sutton*

Annex: Graphs

- Grand Total CO₂ (kt) Emissions - Boroughs in West London Climate Emergency Group, 2005-2022 (DESNZ)
- Grand Total CO₂ (kt) Emissions - Boroughs in West London Climate Emergency Group, 2005-2022 (DESNZ)
- Theoretical territorial emission reduction trajectory – London Borough of Brent

Table 1: Borough-wide carbon emission statistics

Ref	Measure	Current Brent Data (Data source)	Brent Data from previous reporting cycle	Brent July 2019 baseline (Data source)	Current average for boroughs in West London Climate Group* (Mean)	Current Inner-London average ** (Mean)	Current Outer-London average *** (Mean)	Target for end of 2024-25 / next annual dataset	Projected Target by 2030 (unless otherwise stated)	Council role/influence in achieving target	Commentary
1.	Borough-wide territorial carbon emissions (Industrial, Commercial, Public sector, Domestic, Transport)	910.2 Tonnes CO₂	995.7 Tonnes CO ₂	999.8 Tonnes CO ₂	880.3 Tonnes CO ₂	868.7 Tonnes CO ₂	863.3 Tonnes CO ₂	796.4 Tonnes CO ₂	N/A	Indirect Medium Influence	Latest data: 2022. These emissions only include CO ₂ emissions from the industrial, commercial, domestic and public sectors and transport. Other lesser greenhouse gas emissions such as agricultural, waste and land-use have not been included.
2.	Borough-wide territorial carbon emissions per capita	3 Tonnes CO_{2e}	3.2 Tonnes CO _{2e}	3.3 Tonnes CO _{2e}	3.2 Tonnes CO _{2e}	7.2 Tonnes CO _{2e}	3.0 Tonnes CO _{2e}	N/A	N/A	Indirect Medium Influence	Latest data: 2022. These statistics cover territorial CO _{2e} which includes all greenhouse gases per capita emissions that occur within Brent's borders. The inner London average is skewed by a very high figure for City of London.
3.	Borough-wide consumption-based carbon emissions per capita	8.1 Tonnes CO₂	7.2 Tonnes CO ₂	7.95 Tonnes CO ₂	9.13 Tonnes CO ₂	9.1 Tonnes CO ₂	9.17 Tonnes CO ₂	N/A	N/A	Indirect Medium Influence	Latest data: 2021. Consumption-based emissions (CBE) includes emissions related to Food, Housing, Transport, Goods, Services, Construction & Machinery, & Government. Unlike territorial emissions, which account for emissions produced within a specific area, CBEs are allocated to the end consumers, reflecting the total climate impact of lifestyles and consumption patterns, regardless of the area the emissions occur.

Table 2: Key Performance Indicators by each Climate Strategy Theme

Ref	Theme	Measure	Current Brent Data (Data source)	Brent Data from previous reporting cycle	Brent July 2019 baseline (Data source)	Current average for boroughs in West London Climate Group* (Mean)	Current Inner-London average* (Mean)	Current Outer-London average*** (Mean)	Target for end of 2024-25 / next annual dataset	Projected Target by 2030 (unless otherwise stated)	Council role/influence in achieving target	Commentary
1.	Theme 1 – Consumption, Resources and Waste	Annual household recycling rate	28.2%	33.4%	34.2%	33.2%	26.2%****	34.4%*****	41%	N/A	Indirect Medium Influence	Latest data: Financial Year (FY) 2023/24. The council has recently entered a new long-term waste contract with Veolia. The council has limited direct influence over resident's recycling behaviours but will continue to undertake education initiatives and innovate wherever possible. It is not possible to set a projected target for 2030 before the new waste contract and services and national 'Simpler Recycling' changes are embedded.
2.	Theme 1 – Consumption, Resources and Waste	Annual household waste per head	237.6kg	255.5kg	288.7kg	296.9kg	272kg****	320.5 kg*****	288kg	N/A	Indirect Medium Influence	Latest data: FY 2023/24. At present, Brent is achieving its annual target for 2024-25. See comments in row above for further context.
3.	Theme 2 – Sustainable Travel	% of average daily trips made by active travel measures	39%	39%	33%	41%	52%	37%	40%	42%	Indirect Medium Influence	Latest data: FY 2022/23. The council has limited direct influence over Brent residents' daily travel choices but will continue to support the shift to more active travel trips by pulling the levers at its disposal.

													The Active Travel Implementation Plan , once finalised, is the focal point for the action that the council be pursuing. Much of this work remains dependent on available funding.
4.	Theme 2 – Sustainable Travel	% of average daily trips made by public transport	29%	29%	36%	25%	27%	22%	29%	31%	Indirect Low Influence		Latest data: FY 2022/23. The number of people using public transport is thought to have reduced significantly in years following COVID-19. We work with closely with TfL to ensure the smooth running of the public transport system.
5.	Theme 2 – Sustainable Travel	Overall sustainable modeshare	68%	68%	69%	65%	79%	58%	69%	73%	Indirect Low-Medium Influence		Latest data: FY 2022/23. This data measure reflects a combination of the two metrics above.
6.	Theme 2 – Sustainable Travel	% of residents doing at least two x 10 minutes of active travel a day	30%	30%	31%	33%	42%	31%	32%	48% 70% By 2041 (Long Term Transport Strategy)	Indirect Low Influence		Latest data: FY 2022/23. Brent's figures are marginally lower than average and the previous position from 2019. There is also a public health aspect to this metric, and beyond sustainable travel strategies, also links to initiatives being pursued as part of the Borough Plan and joint Health and Wellbeing Strategy.
7.	Theme 2 – Sustainable Travel	% of population within 400m of a strategic cycle network	14%	14%	6%	13%	47%	12%	18%	43% 80% By 2041 (Long Term Transport Strategy)	Mixed Medium Influence		Latest data: FY 2022/23. Inner London's strategic cycle network is significantly more advanced than in Outer London, which is in part set by TfL funding and priority roll-out of schemes. The immediate proposals for improving the cycle network in Brent are the development of a TfL scheme that would make it easier for local people to

												<p>walk and cycle between Wembley and Willesden Junction.</p> <p>We are also finalising the feasibility study setting out proposed 'Green Corridors' for active travel improvements as part of the Church End & Roundwood Green Neighbourhoods scheme.</p>
8.	Theme 2 – Sustainable Travel	Annual vehicle kilometres travelled (millions)	962	962	1024	1163	628	1154	954	901	Indirect Low Influence	<p>Latest data: FY 2022/23. Brent's residents are driving less annually than both the West London and outer London average, but more than inner London.</p> <p>The shift away from petrol and diesel vehicles does not necessarily mean a shift away from the car altogether, which means the promotion of zero emission (at source) vehicles is important.</p>
9.	Theme 2 – Sustainable Travel	No. of cars owned	92,878	92,878	97,348	98,063	49,733	102,232	91,774	84,048	Indirect Low Influence	<p>Latest data: FY 2022/23. There are less cars owned in the borough than the West London and Outer London average, but more than inner London.</p> <p>See comments in row above for further context.</p>
10.	Theme 2 – Sustainable Travel	Average NO ₂ annual mean concentration	27.3 (provisional)	31.9	44.75	N/A	N/A	N/A	31.13	10 (WHO guidelines)	Indirect Medium Influence	<p>Latest data: 2023 (NB: this is provisional subject to Defra approval). The council has recently adopted a new Air Quality Action Plan which has extended the Air Quality Management Area Order for the whole borough and sets out air quality improvement plans.</p>
11.	Theme 2 – Sustainable Travel	Average PM _{2.5} annual mean concentration	10.95 (provisional)	10.15	19.8	N/A	N/A	N/A	9.77	5	Indirect Medium Influence	<p>Latest data: 2023 (provisional, as above). See</p>

										(WHO guideline s)		comments in row above for further context.
12.	Theme 2 – Sustainable Travel	Average PM ₁₀ annual mean concentration	18.1 (provisional)	20.18	23.25	N/A	N/A	N/A	19.86	15 (WHO guideline s)	Indirect Medium Influence	Latest data: 2023 (provisional, as above). See comments in row above for further context.
13.	Theme 2 – Sustainable Travel	% of borough covered by Healthy Neighbourhood (Low-Traffic) Schemes	12%	12%	9% (est.)	19%	33%	21%	N/A	N/A	Direct	Latest data: 2024. Brent's number is lower than all other comparable London datasets. Several proposed schemes were either removed or have not yet been trialled due to resident concerns which were raised during the consultation process. Several new schemes are currently being actively considered alongside engagement with residents.
14.	Theme 2 – Sustainable Travel	Proportion of borough schools with school streets scheme	33%	33%	0%	15%	23%	18%	36%	50%	Direct	Latest data: 2024. Brent has a significantly higher proportion (36 schemes currently in operation) of School Street Schemes when compared to West, Inner and Outer London averages. The schemes have helped towards a 14% increase in active travel since last year 2021-22, meaning more pupils are getting to school by walking, cycling, or scooting.
15.	Theme 2 – Sustainable Travel	No. of Bike Hangars in Brent	144	144	59 (est.)	N/A	N/A	N/A	154	204	Direct	Latest data: 2024. Brent has more than doubled its number of bike hangars since 2019. Demand for bike hangars significantly outweighs

												supply and whilst the council is doing all that it can to deliver an increased number of hangars in the borough, this is dependent on available funding. There are also ongoing issues with hangars being broken into or damaged.
16.	Theme 2 – Sustainable Travel	Overall no. of bike hangar spaces allocated	864	864	354	N/A	N/A	N/A	924	1224	Indirect Medium Influence	Latest data: 2024. Brent has more than doubled its number of bike hangar spaces since 2019. See comments in row above for further context.
17.	Theme 2 – Sustainable Travel	% of Schools with a gold, silver or bronze accredited Sustainable School Travel Plan	48%	48%	47%	N/A	N/A	N/A	52%	75%	Indirect Medium-High Influence	Latest data: 2024. Whilst the council continues to provide support, advice, and encouragement to schools on developing and submitting a travel plan, the responsibility to participate in this scheme ultimately lies with schools. Feedback shows this can be difficult for some schools due to capacity issues and we continue to work collaboratively to alleviate this. For example, we have developed Brent Schools Climate Action Guide which provides additional guidance on this topic and will be facilitating schools to learn best practice from others who are 'Gold' accredited.
18.	Theme 2 – Sustainable Travel	No. of Electric Vehicle Charge Points in Brent	941	941	207	705	791	309	N/A	Between 1784-2194	Direct	Latest data: 2023. Brent's record of electric vehicle charge point installation is higher than the West London average and inner London average whilst also being considerably higher than the outer London average.

19.	Theme 3 – Homes, Buildings, and the Built Environment	No. of energy efficiency retrofit improvement projects undertaken on council buildings (non-domestic) since 2019	78	78	N/A	N/A	N/A	N/A	N/A	N/A	Direct	Latest data: 2024. Brent's figure of 78 projects is since obtaining £3.2m of Public Sector Decarbonisation Funding in 2020 to provide energy efficiency improvement works to 16 council owned buildings. We have recently procured for a Corporate Heat Decarbonisation Plan to develop an overarching net zero strategy for council buildings and inform our upcoming bid to PSDS Phase 4 to part fund the plan.
20.	Theme 3 – Homes, Buildings, and the Built Environment	No. energy efficiency retrofit improvement projects undertaken on Council maintained schools (primary) since 2019	42	40	N/A	N/A	N/A	N/A	41	N/A	Direct (Primary)	Latest data: 2024. We do not have comparable data since 2019. There are 37 council-maintained community schools across 39 sites. The council has submitted a bid for the most recent Public Sector Decarbonisation Scheme round which was earmarked specifically for schools. A successful bid would enable a further four council-maintained schools to be retrofitted.
21.	Theme 3 – Homes, Buildings, and the Built Environment	% Reduction in emissions from council own estate and operations emissions 2010-11 baseline	71.6%	71.4%	56.9%	N/A	N/A	N/A	71.9%	100%	Direct	Latest data: 2023/24 FY. In 2023/24, significant energy savings (in kWh) were achieved over the previous 2022/23 year, especially in Brent Civic Centre. However, the official UK 2023 Green House Gases (GHG) conversion factor kWh to CO ₂ for electricity worsened, due to global factors causing the short-term increased use of fossil fuels in the electricity generation mix. Therefore, only a small reduction in CO ₂

												emissions has been reflected in this year's data. This CO ₂ conversion factor is forecast to reduce again in future years, leading to additional CO ₂ savings.
22.	Theme 3 – Homes, Buildings, and the Built Environment	No. of council housing stock (domestic) retrofitted with at least one energy efficiency measure since 2019	873	1,073	N/A	N/A	N/A	N/A	N/A	N/A	Direct	Latest data: 2024. This data is drawn from the council's housing asset database. The reduced figure from the previous reporting cycle is due to actual rather than estimated data.
23.	Theme 3 – Homes, Buildings, and the Built Environment	% of council housing stock rated EPC C or above	59%	57%	35%	N/A	N/A	N/A	57.5%	N/A	Direct	Latest data: 2024. The council has improved its asset management software to provide better project 'EPC' data and is gathering more intelligence over time from stock condition surveys.
24.	Theme 3 – Homes, Buildings, and the Built Environment	% of council housing stock rated EPC B or above	4%	5%	0%	N/A	N/A	N/A	N/A	N/A	Direct	Latest data: 2024. See comments in row above for further context. The discrepancy in the data (i.e. the reduced figure from previous reporting cycle) is currently being investigated.
25.	Theme 3 – Homes, Buildings, and the Built Environment	Amount of total retrofit external grant funding secured for domestic and non-domestic, since 2019	£8.1m	£8.1m	£0	N/A	N/A	N/A	N/A	N/A	Direct	Latest data: 2024. Since 2019, we have significantly enhanced our ability to horizon scan and develop funding bids to support our ambitions. The £8.1 figure comprises: £3.2m PSDS, £3.5m Green Homes Grant/Home Upgrade Grant, £1.3m SHDF. This does not include s106 Brent Carbon Offset Funding.
26.	Theme 3 – Homes, Buildings,	% of fuel poor households in Brent	12.3% (18,570)	14.8%	17.3% (20,322)	10% (13,495)	10.4% (12,162)	10.5% (13,741)	N/A	N/A	Indirect Low Influence	Latest data: 2022. The overall number of Brent households in fuel poverty is

	and the Built Environment											<p>one of the highest in London, trumped only by Newham, Haringey, Barking & Dagenham, & Waltham Forest.</p> <p>Brent has no direct influence over levels of fuel poverty, the contributing factors are typically low income, energy inefficient homes and high energy costs.</p> <p>Brent is seeking to reduce fuel poverty through retrofit and</p> <p>we have also set up the Brent Well and Warm Advice service which provides free energy advice and support to fuel poor, vulnerable residents.</p>
27.	Theme 3 – Homes, Buildings, and the Built Environment	No. of private properties that have received at least one energy efficiency measure via Green Homes Grant / Home Upgrade Grant/Carbon Offset Fund	43	36	0	62	N/A	N/A	71	N/A	Direct	<p>Latest data: 2024. The Green Homes Grant/Home Upgrade Grant scheme was administered by the London Borough of Ealing, on the consortium's behalf with the delivery partner Warmworks. The scheme has now closed. The Brent CO2GO scheme which utilises a tranche of Carbon Offset is continuing, and we are in the final stages of retrofitting 35 properties this year- currently 17 properties have received energy efficiency measures.</p>
28.	Theme 3 – Homes, Buildings, and the Built Environment	% of annual major developments that include renewable energy sources	77%	61%	N/A	N/A	N/A	N/A	N/A	N/A	Direct	<p>Latest data: 2022/23. To support the council's overarching environmental sustainability aspirations Brent has adopted an 'Environment & Sustainable Development' Supplementary Planning Document which provides details of how the council will address the environmental</p>

												impacts of development through the planning process. It is in addition to the Local Plan and London Plan.
29.	Theme 3 – Homes, Buildings, and the Built Environment	% of annual major developments that were air quality neutral or positive	100%	69%	N/A	N/A	N/A	N/A	N/A	N/A	Direct	Latest data: 2022/23. See comments in row above for further context.
30.	Theme 4 – Nature and Green Space	No. of trees planted annually in public areas	367	616	800	N/A	N/A	N/A	N/A	N/A	Direct	Latest data: 2023/24. Tree planting is dependent on funding not just for the planting but for subsequent maintenance. There is no specific annual target for tree planting at the present time. A new Tree Strategy for the borough is being developed.
31.	Theme 4 – Nature and Green Space	Tree Equity Score	81	81	N/A	87	89	87	N/A	N/A	Indirect Low Influence	Latest data: 2024. The Tree Equity Map is a relatively new tool which provides local authorities with an overall tree equity score based on demographics and number of trees planted. As the tool is new it is not possible to provide a baseline from 2019.
32.	Theme 4 – Nature and Green Space	% tree canopy cover in Brent	14%	14%	N/A	N/A	N/A	N/A	N/A	N/A	Indirect Low Influence	Latest data: 2020. Brent commissioned a study on borough-wide canopy cover from iTree in 2020. Brent's score is lower than the estimated London-wide canopy cover of 21%.
33.	Theme 4 – Nature and Green Space	Square metres of wildflower meadows created and planted	792,727	792,727	792,727	N/A	N/A	N/A	N/A	N/A	Direct	Latest data: 2024. Brent's planting of wildflower meadows and bee corridors took place in and around when we declared a climate and ecological emergency in 2019.

												With a new national BNG law in place this year and a Brent BNG officer in place we will work more proactively to implement biodiversity across the borough.
34.	Theme 4 – Nature and Green Space	Number of Sites of Importance for Nature Conservation (SINC) sites in active positive management	62	62	62	N/A	N/A	N/A	62	62	Indirect Low-medium influence	Latest data: 2024.
35.	Theme 4 – Nature and Green Space	No. of green spaces with known community gardens / orchards	4	4	2	N/A	N/A	N/A	7	9	Mixed Medium influence	Latest data: 2024. There were two community gardens in 2019 at Chalkhill Open Space (St Davids Close and Harlesden Town Gardens), Two additional community gardens/orchards have since been opened at Leybourne Open Space and Northwick Park.
36.	Theme 4 – Nature and Green Space	No. of green flag schemes implemented in parks	0	0	0	N/A	N/A	N/A	1	4	Direct	Latest data: 2024. The new Grounds Maintenance Contract includes a commitment to apply for 1 Green Flag per financial year.
37.	Theme 4 – Nature and Green Space	No. of London in Bloom awards	9	0	0	N/A	N/A	N/A	10	12	Direct	Latest data: 2024.
38.	Theme 5 – Supporting Communities	No. of community projects awarded grant funding by Brent Together Towards Zero Grant scheme	70	70	0	N/A	N/A	N/A	85	N/A	Direct	Latest data: 2024. The scheme went live in 2022 therefore there is no baseline for 2019. Brent funding for the scheme is identified on a yearly basis, so it is not possible to set a target up until 2030 without funding certainty.
39.	Theme 5 – Supporting Communities	No. of Brent Environment Network Members	2942	3403	0	N/A	N/A	N/A	4000	10,000	Indirect High Influence	Latest data: 2024. Since launching in 2021, there are 2942 members of the network. The figure reported

												in the previous cycle was found to contain duplications which have been corrected.
40.	Theme 5 – Supporting Communities	No. of business signed up to Brent Business Climate Charter or Camden/Brent Business Challenge	51	6	0	N/A	N/A	N/A	40	N/A	Indirect Medium Influence	Latest data: 2024. We launched the Brent Climate Charter at an event at Wembley Stadium in November 2023. Currently, there have been 18 signed up to the Brent Business Climate Charter and 33 signed up to the Brent / Camden Business Challenge
41.	Theme 5 – Supporting Communities	No. of Brent businesses provided with funding to undertake energy efficiency retrofit projects from the Brent for Business Energy Efficiency Scheme	15	15	0	N/A	N/A	N/A	25	N/A	Direct	Latest data: 2024. A total of 90 SMEs submitted an EOI, out of which 54 received free energy audits and a further 15 received a free energy audit and grant towards the cost of one or more energy efficiency measures. Following £94k in grant funding from April 2024-25 for the Brent Climate Charter or Camden/Brent Business Challenge there is no further money allocated until 2030 and therefore it is not possible to set a longer-term target.
42.	Theme 5 – Supporting Communities	No. of faith-based organisations actively utilising Brent Faith Climate Action Plan	7	3	0	N/A	N/A	N/A	10	96	Indirect Medium Influence	Latest data: 2024. The Brent Faith Climate Action plan was developed as a joint initiative with the Brent Faith Climate Action Group launched at the Wembley Sephardi Synagogue in July 2023.
43.	Theme 5 – Supporting Communities	No. of bi-annual hits on the Climate Emergency Website Landing Page	693 (Jan – June 24)	518	0	N/A	N/A	N/A	1200	2000	Indirect Low influence	Latest data: 2024. The climate emergency web pages were developed in response to the council developing a climate emergency in 2019. The council has since updated its website and operating system and there is no

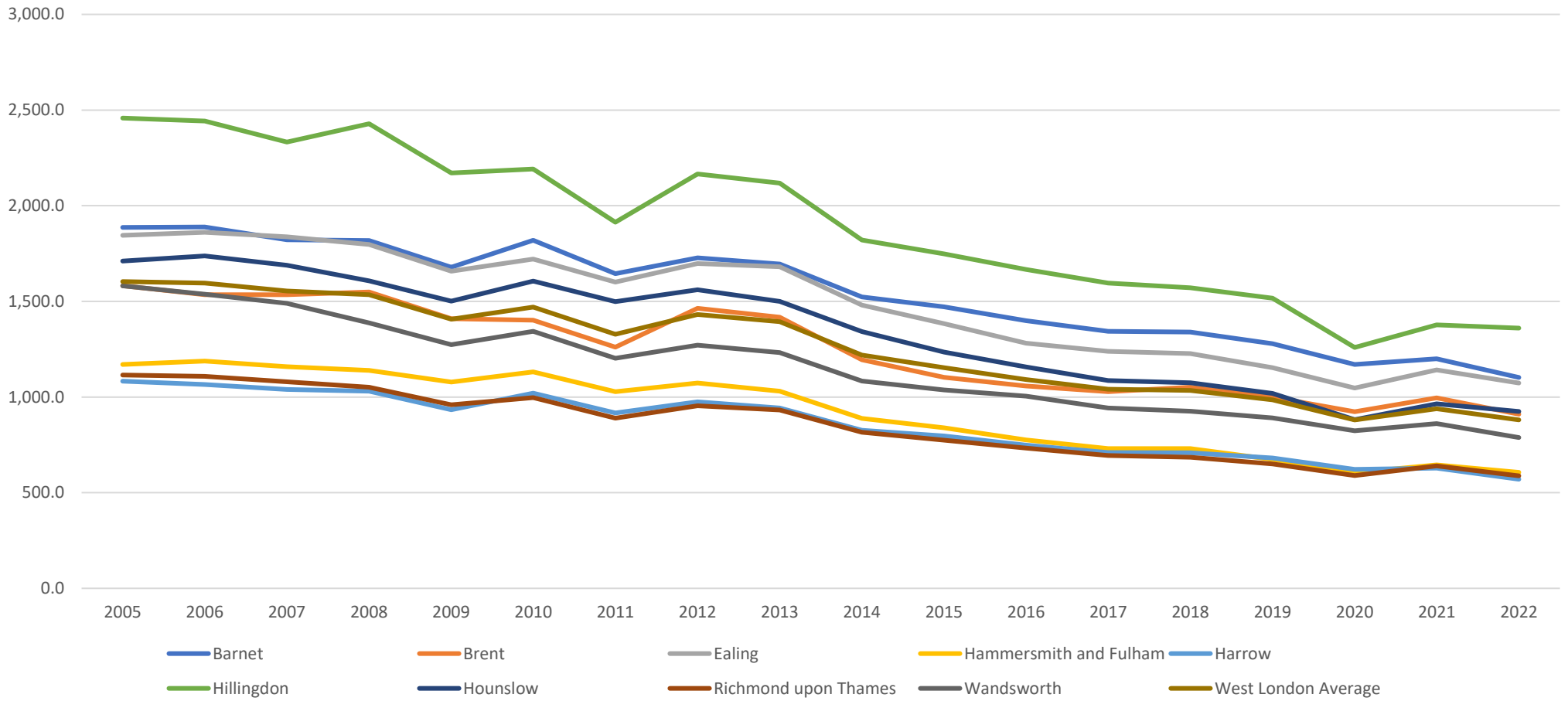
												historical data of hits since 2019. The new website provides data from July 2023 and will serve as the baseline for this metric going forward.
44.	Theme 5 – Supporting Communities	Annual no. of students engaged with courses at Brent’s Green Skills Centre	1292	1621	0	N/A	N/A	N/A	N/A	N/A	Indirect Medium Influence	Latest data: 2023-24 FY. Brent opened its Green Skills Centre in November 2022 at the College of North West London. This is one of the only sites of its kind in London.

Annex 1 - Graphs

Grand Total CO₂ (kt) Emissions - Boroughs in West London Climate Emergency Group, 2005-2022 (DESNZ)

Council Name	Year																	
	2005	2006	2007	2008	2009	2010	2011	2012	2013	2014	2015	2016	2017	2018	2019	2020	2021	2022
Barnet	1,886.4	1,888.7	1,822.4	1,817.5	1,678.0	1,818.9	1,645.1	1,727.5	1,695.5	1,523.5	1,470.9	1,399.0	1,343.9	1,339.6	1,278.6	1,170.4	1,200.1	1,102.2
Brent	1,581.8	1,534.9	1,534.5	1,549.7	1,408.9	1,401.1	1,260.2	1,463.2	1,417.2	1,194.3	1,103.0	1,058.2	1,028.2	1,050.6	999.8	923.8	995.7	910.2
Ealing	1,845.1	1,861.0	1,837.6	1,797.9	1,657.2	1,720.5	1,600.5	1,697.2	1,680.9	1,480.6	1,383.4	1,281.4	1,238.9	1,227.3	1,153.9	1,047.0	1,141.2	1,073.2
Hammersmith and Fulham	1,170.5	1,187.9	1,158.8	1,139.7	1,077.9	1,130.8	1,027.6	1,073.2	1,030.8	887.8	838.7	776.2	730.5	731.0	674.0	604.9	644.9	606.2
Harrow	1,082.9	1,064.9	1,039.7	1,030.5	933.6	1,019.5	916.3	975.5	942.0	826.3	795.9	748.9	709.9	708.9	680.8	621.3	627.7	570.3
Hillingdon	2,458.0	2,442.1	2,332.4	2,428.1	2,171.3	2,191.8	1,914.3	2,165.6	2,117.9	1,821.1	1,747.6	1,666.4	1,595.1	1,571.0	1,516.6	1,259.1	1,377.0	1,360.2
Hounslow	1,710.3	1,737.5	1,688.2	1,606.6	1,501.6	1,606.0	1,498.6	1,560.3	1,499.7	1,342.2	1,234.4	1,157.5	1,086.7	1,074.9	1,019.5	881.7	964.2	924.4
Richmond upon Thames	1,115.0	1,107.7	1,079.8	1,051.6	959.2	997.1	889.9	954.2	932.7	815.6	773.9	732.6	694.3	685.3	650.1	589.8	640.1	588.1
Wandsworth	1,581.1	1,537.4	1,489.6	1,387.9	1,273.4	1,343.4	1,202.8	1,271.5	1,232.4	1,083.3	1,037.4	1,005.1	942.6	926.3	891.2	824.0	861.3	788.2
West London Average	1,603.4	1,595.8	1,553.7	1,534.4	1,406.8	1,469.9	1,328.4	1,432.0	1,394.3	1,219.4	1,153.9	1,091.7	1,041.1	1,035.0	984.9	880.2	939.1	880.3

Grand Total CO₂ (kt) Emissions - Boroughs in West London Climate Emergency Group, 2005-2022 (DESNZ)



Theoretical territorial emission reduction trajectory - Brent

